

*You're Invited*

**to become a member today!**

Complete form and mail a check to:

**MRLGS, P.O. Box 1391**

**Minot ND 58702-1391**

E-Mail: [mrlgsND@outlook.com](mailto:mrlgsND@outlook.com)

Visit us on Facebook

**MEMBERSHIP APPLICATION**

(Please Print)

Name \_\_\_\_\_

Address \_\_\_\_\_

City \_\_\_\_\_

State and Zip \_\_\_\_\_

County \_\_\_\_\_

Email \_\_\_\_\_

Phone \_\_\_\_\_

☐ Yes, I would like someone to  
contact me.

By joining you will have access to  
other helpful information from  
our valuable resources.

If you are interested in genealogy  
and would like to keep informed on  
new information to help you, we  
invite you to join the Mouse River  
Loop Genealogical Society.

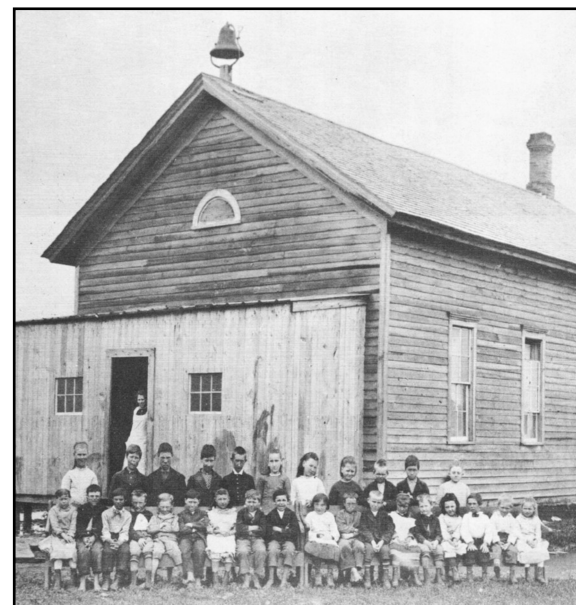
You will find great interaction with  
other members and you will have an  
experienced member guide you  
through the meetings until you feel  
comfortable.

Mouse River  
Loop



Focusing on the counties of  
Bottineau, Burke, McHenry,  
Mountrail, Renville and Ward.

**DISCOVER YOUR**



**ROOTS**

*Join*

**Mouse River Loop  
Genealogical Society**

**&**

**BENEFIT**

**from our members!**

## CHARTERED ON APRIL 1, 1978

Our purpose is to collect, catalog, and preserve genealogical and historical material. To promote interest and activity in genealogy, to share knowledge of resources, and to exchange information and techniques in research.

## MEMBERSHIP

Membership is open to every person interested in genealogy which is the study or investigation of ancestry and family histories.

**For more information  
or have questions...  
Visit us on Facebook**

## PROJECTS

- ◆ Recording and printing census records and cemetery readings.
- ◆ Abstracting vital statistics from old newspapers. Purchase of genealogical reference books, periodicals and microfilms.
- ◆ Sponsor genealogical seminars and workshops.

## DUES

Individual, Family and  
Institutions .....\$20.00\*

### \*Additional \$5.00

If quarterly publication is mailed  
in the U.S.

*Contact us for total due if quarterly  
publication is mailed outside the U.S.*

## BENEFITS

- ◆ Membership entitles each member to receive the North Central North Dakota Genealogical Record newsletter. The newsletter highlights stories, photos and historical articles as well as genealogical information. Back issues are available.
- ◆ Membership also entitles you to have your queries published in The Record as space allows.
- ◆ Research assistance from local society members is available.

## MEETINGS

Meets first Saturday of every month  
except July at 1:00 p.m. in the  
Community Room, lower level at  
Minot Public Library.

*Thank you  
for becoming  
a member !*

*Please complete the  
form on the back side  
of this panel and  
mail in with your dues.*